

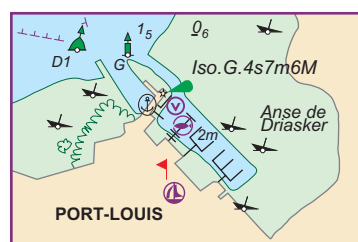
West France Cruising Companion

CORRECTIONS to 24 Feb 2002

Note: all coordinates are referenced to European Datum 50.

Page	Harbour	Correction
3	Contents	Chapter 3, after Concarneau insert: Lorient, Port Tudy, R. Etel
7	Introduction	Tourism, line 3, Tel No, substitute 0906 824 4123. Line 4, delete Info Tel No.
9	Ditto	Weather Information, 1st para, lines 5/6: The names of sea areas within MetArea II, as used in Navtex (and Inmarsat) weather broadcasts, have changed. For the purposes of French and Spanish forecasts for the Biscay coast, readers should be aware that the former three sea areas of West Brittany, North and South Biscay were, with effect from 4 Feb 2002, sub-divided and re-named as follows (north to south): Iroise – coast out to 6°W, bounded by 48°27'N and 47°30'N. Yeu – coast out to 6°W, bounded by 47°30'N and 46°30'N. Rochebonne – coast out to 6°W, bounded by 46°30'N and 45°00'N. Cantabrico – coast out to 7°W, bounded by 45°00'N and N Spain. <ul style="list-style-type: none">• Note that the smaller size of these four areas should enable French and Spanish forecasts to be much more specific, in contrast to British forecasts for the whole of sea area Biscay.• Further west in the Atlantic, the former Small Sole equates to Pazenn (6°W to 12°W, and 48°27'N to 45°N); Galicia becomes Finisterre (7°W to 12°W, and 45°N to 41°50'N); and West Portugal becomes Porto (coast to 12°W, and 41°50'N to 39°N). Other changes occur further south, but further west Romeo, Charcot and Josephine are unchanged.• UK readers will already know that the British sea area 'Finisterre' was re-named 'Fitzroy' wef 4.02.02. This avoids ambiguity with the French/Spanish/Portuguese sea area 'Finisterre' (above) which has different boundaries. 2nd para, lines 4/5, amend: (Corsen), Ch 80 for relay stations north of CROSS Etel and Ch 79 for those south, at the times listed in the MRNA. [Author's note: Soulac ceased to be a sous-CROSS in Jan 2001 and became simply a radio relay station for CROSS Etel]. Line 10, after 'in force' insert: Corsen (E) on 490 kHz transmits weather bulletins in French at 0840 and 2040 for sea areas Casquets, Ushant, Iroise, Yeu, Rochebonne, Cantabrico, Finisterre, Pazenn, Sole, Fastnet, Shannon, Lundy and Irish Sea.
14	Getting there	Further options, para a, line 11, amend: 20 kms. Line 13, after my insert: boat.
17	L'Aberwrac'h	Facilities, last two lines line, amend '0806 ... 413' to read: 0892 680877; from the cued menu select *, then 4, then 1, then 3.
31	Rade de Brest	Chart, left edge, Presqu'île de Qu'Ølern, amend: Presqu'Île Qu'Ølern.
35	Camaret	LH col, last line, after entrance insert: A NCM buoy, Q, an unlit ECM buoy and an unlit SCM buoy have been laid about 0.5M NE and E of the Plaisance de la Pointe marina, close off Pte Ste Barbe (NM 5/2002 of 31 Jan 2002 refers).

- 38 Morgat Chartlet, shift the PHM buoy 70m S to 48°13'·53N 04°29'·58W.
- 39 Ditto Lines 1/2, amend "... there track 260°/4 cables to the PHM entry buoy 48°13'·53N 04°29'·58W;"
Marina, Anchorage, line 2, after Morgat, insert: at 48°13'·74N 04°29'·58W. After local moorings insert: which may be available to visitors.
- 49 Audierne **Approaches**, after the first paragraph, insert:
The Lat/Long of the approach waypoints are:
a. from the West, 47°59'·60N 04°32'·90W; and
b. from the SE, 47°59'·60N 04°31'·50W.
- 50 Ditto **Pilotage**, Audierne, line 1, after *Fl(3) WG12s*, insert: 48°00'·60N 04°32'·35W.
Lower photograph: Note that extra pontoons have been installed between the Marina and the 'S' of Supermarket.
- 61 Sainte Marine LH column, Visitors, 1st para: Note that 'A' pontoon is for boats >10m LOA; smaller boats berth on pontoons 'E' or 'F'.
- 62 Bénodet Chartlet: Note that the entry beacons at Les Verrés, La Rousse and Le Four are all built on drying rock; give them a wide berth at LW, especially Les Verrés. Annotate also the Pilotage notes on page 60.
- 65 Port-La-Forêt Chartlet, first SHM beacon, amend: light to Fl G 4s 8m 1M.
- 70 Concarneau Chartlet, PHM buoy QR in lower left corner, move to 47° 51'·614N 03°55'·534W.
Channel east of La Ville-Close, amend 3m depth to 4m.
- 74 Lorient Restaurants, insert: Les Clos des Vignes, 7 Cours de la Bôve (next to Launderette), Tel 02.97.64.15.72, excellent brasserie run by ex-Merchant Navy engineer; busy at lunchtime, closed Sat lunch and Sun.
- Ditto East Side, 2nd para, last 2 lines, amend: In summer 2001 nil progress was reported on the projected new marina at Locmalo.
- 74/5 Ditto Port Louis, Bureau du Port, lines 8-17, delete: Caution ... forecasts. Substitute: Visitors berth on a new *accueil* pontoon (approx 50m long; AC & FW to be fitted) (see plan below). The HM, in a new office mid-way along the stone jetty, can now see approaching yachts and assigns a vacant berth; these are no longer posted, but forecasts are. Caution: the regular ferry, which berths on the slip at the end of the stone jetty, proceeds with some gusto!



Insert: Launderette, in main street opposite fishmonger; sacks of laundry can be washed/dried/collected in a day for about €9.90.

- 76 Ditto Charts, line 2, after SHOM 7140 add: (the 2001 edition is drawn to WGS Datum).
Anchorage, first para, lines 5-11, delete: 'Note ... restricted'.
Substitute: 'Note that the former submarine base, north of Kernével marina, is a prohibited area (no hardship); and the de-activated naval base north and east of Lorient marina is restricted'. (*Apologies for a printing error*)
- 77 Ditto Insert revised inset of Port Louis; see correction on pages 74/5.
- 86 Introduction The Sea and the Land, line 9, after Île Houat and Île Hoëdic, insert: (covered by new AC 2835 at 1:20,000).
- 99 Port Haliguen Railway, line 4, amend 35 hrs to 3½ hrs.
- 129 Vilaine River Charts, lines 3/4, delete SHOM 2381 etc; insert: 7144 (1:15,000, WGS datum).
Chartlet, insert the following unlit cardinal beacons between Pte de Kervoyal and Basse Bertrand ☆ Iso WG 4s: SCM at 47°30'·72N 02°31'·49W; WCM at 47°30'·68N 02°32'·02W; and ECM at 47°30'·96N 02°31'·00W.
- 137/9 La Turballe Charts, line 3 delete 6826 etc; insert 7145 (1: 25,000, WGS datum).
Pilotage, penultimate line, both 006·5° Ldg lts, F Vi, amend: Dir Iso R 4s. This correction applies also to the top photograph on page 137, and to the chartlet on page 139.
- 140 Le Croisic Chartlet, Jetée du Trehic. The white sector of the Iso WG 4s light on the end of the jetty has been widened by 8°. The new sectors are: G 042°-093° (51°), W 093°-145° (52°), G 145°-345° (200°).
- 141 Ditto Charts, line 3, 6826 ... 1:17,000, amend: 7145 (1:25,000, WGS datum).
- 148 Le Pouliguen Charts, last line, add: 7145 (1: 25,000, WGS datum).
Approaches, LH column, line 2, Le Grand Charpentier lighthouse, Q WRG 22m 14/10M. The light sectors, which are not listed in this book, have been significantly changed, as follows:
G 020°-054° (34°), W 054°-062° (8°), R 062°-092° (30°),
W 092°-111° (19°), R 111°-310° (199°), W 310°-020° (70°).
These changes introduce a red sector over Plateau de la Banche, an enlarged green sector over Plateau de la Lambarde and a white sector over the channel between these two Plateaux. See AC 2986.
- 152 Pornichet Charts, last line, add: 7145 (1:25,000, WGS datum) covers the marina.
- 153 Ditto Approaches, LH column, line 3, Le Grand Charpentier lighthouse: see correction 148.
- 157 St Nazaire Chartlet, Le Vieux Môle, Oc (2+1) 12s 18m 12M, amend: Q(3) 10s 18m 11M. Close north, ☆ QY, amend Fl(2) R 6s. East Lock, Fl(2) R 6s 9m 6M, amend: Fl(3) R12s 9m 9M.

- 158 Ditto Lower picture, Vieux Môle, Oc (2+1) 12s, amend: Q(3) 10s.
- 159 River Loire Chartlet, from seaward amend: Pte St Gildas, 20m vice 23m. Le Pointeau, 10/7M vice 10/6M. Fl(3) WR 12s, 6/4M vice 9/6M. Fl(2) 6s, amend: 10m 10M vice 12M. Oc R 4s, amend: Fl R 4s. Iso G 4s and Fl G 2.5s, amend both to Fl(2) G 6s.
- 161 Pornic Daymarks, lines 1/2, Notre Dame isolated danger beacon, amend (more logically) to west cardinal beacon, VQ(9) 10s 7m 3M.
Ditto Chartlet, amend light, Fl (2+1) W 10s, (SW elbow) to: Fl W 2.5s. Amend light Fl G 2.5s (E Jetty head) to: Fl (2) G 6s; ditto on page 162, top photograph.

169-219 Île d'Yeu to Pte de la Coubre – **New SHOM charts.**

Seven new SHOM charts have significantly improved coastal coverage between Île d'Yeu and Pointe de la Coubre. Lack of space precludes detailed amendments to the charts listed harbour-by-harbour, but harbours from page 169 to page 219 are affected in some degree.

Check when buying a new SHOM chart that it is not an outdated edition, possibly still on sale in some chandleries. The free, annual SHOM mini chart catalogue is an invaluable reference.

The new charts, with area covered, scale and the charts which they replace, are:

New chart	Area covered and scale	Replacing old charts
7402	St Jean de Monts to Les Sables d'Olonne including Île d'Yeu. 1: 20,000.	6523, 6613 and 6853.
7403	Les Sables d'Olonne to NW part of Île de Ré and including Bourgenay. 1: 50,000.	6522.
7404	Pte du Grouin du Cou to Pte de Chassiron, inc Pertuis Breton and d'Antioche. 1: 50,000.	6333, 6334 and 6521.
7412	Île de Ré: NW tip to La Flotte. 1: 15,000.	6668.
7414	Île d'Oléron, eastern side from Île d'Aix to Pertuis de Maumusson. 1: 25,000.	6912 and 6913
7415*	Mouth of the R. Charente. 1: 20,000.	2381.
7405*	La Rochelle to Pte de la Coubre, inc Île d'Oléron. 1: 51,400.	6335.

* Drawn to WGS Datum.

- 170 Port Joinville Chartlet, Jetée Nord-Ouest, Oc (3) WG 12s, delete: Horn (3) 30s.
- 171 Ditto Lower photo, delete: Librairie Nautique; substitute: Launderette.
- 173 Ditto Nautical Needs, first entry: apply the above correction. Last entry, after Chandlery, add: A limited range of SHOM charts.
LH column, Port de la Meule, last sentence, amend: Port de la Meule has one simple restaurant; eat under the trees or inside.
- 178 St Gilles-C-de-Vie Chartlet, Jetée de la Garenne, Q WG, delete: Reed 20s.
- 179 Sables d'Olonne Chartlet, Jetée St Nicolas, UQ (2) R 1s, delete: Horn (2) 30s.
- 203 La Rochelle Restaurants, second bullet, delete: La Marmite etc, (closed).
- 204 Ditto Approaches, RH column, line 8, amend: Chauveau SCM beacon and Roche du Sud WCM buoy ...
- 205 Ditto RH column, Visitors, para (c), line 4, HW +5, amend: HW + $\frac{1}{2}$.

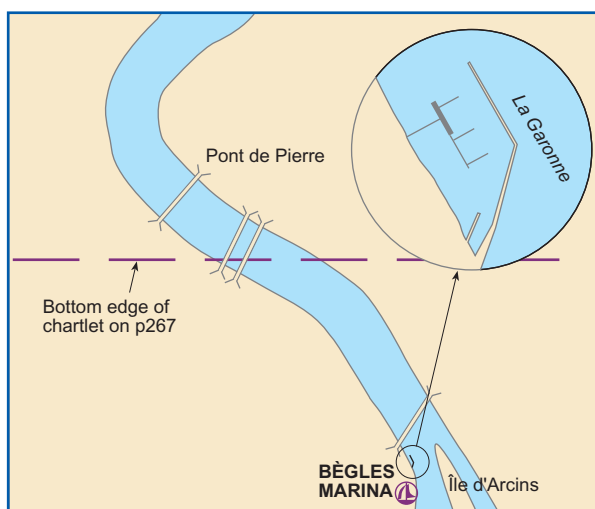
- 221 Landes Range RH column, Information, line 8, delete: CROSS Soulac.
- 223 Arcachon **What to see/do**, line 11, Piquet, amend: Piquey. Line 15, after ... leave the main channel, delete: where a NCM buoy marks the division. (This buoy is no more).
- 227 Ditto Table of buoys, amend the following buoys as of January 2002:
 1N: 44°34'.65N 01°17'.76W.
 2N: 44°34'.75N 01°17'.77W.
 3N: 44°34'.70N 01°17'.01W.
 4N: 44°34'.98N Long = Stet.
 All other buoys are in the positions given for 19 July 2000.
 Note 1: The above coordinates and those in the Table are referenced to ED 50, but note that the latest edition of AC 2750 is referenced to WGS 84.
 Note 2: No 11 SHM buoy may temporarily be a yellow SPM buoy.
- 245 Hendaye Chartlet (upper left), Puerto de Refugio, East jetty, from south to north, amend the 3 lights to: Fl (2) G 7s; Q (3) 5s; and Fl (3) G 9s. West side, amend FR 7m 3M to Fl (3) R 9s 7m 1M. Southwest of this light, a jetty extends SE to just beyond the 4₂ depth. At the jetty head, insert new light, Fl (2) R 7s 6m 3M.
 Chartlet (middle left), Fuenterrabia Marina, insert at the entrance: ☆ Fl(4) G and ☆ Fl(4) R; and symbols for fuel and crane.
- 250 River Gironde Chartlet, upper left, No 6 PHM buoy, Iso R 4s, amend to SCM buoy, VQ (6) + L Fl 10s.
- 251 Ditto Right-hand chartlet. Readers should be aware that NM 4228/01 of 25 Oct 2001 made the following changes to buoyage on AC 2916 in the vicinity of Bec d'Ambès: No 62 WCM buoy, Q (9) 15s, is re-positioned approx 1.5 cables SW of BA4 PHM buoy, Iso R. BA1 buoy is withdrawn. No 64 PHM buoy is lit Fl (2) R 6s. Close west, the beacon Oc G 4s off Île Cazeaux is replaced by No 57A SHM buoy, Fl (2) G 6s. No 63b SHM buoy, QG, (on the Garonne approx 4M SE of Bec d'Ambès) is designated 63a.
- 255 Port -Maubert Line 6, after trees, insert: The entrance is marked by new PHM and SHM beacons. Avoid a mudbank on the north (downstream) side.
- 255 Blaye Line 2, delete all reference to the pontoon, which was damaged by 2001 winter storms; yachts cannot therefore get access to the town.
- 258 Royan Restaurants, LH column, delete Cortez Maltése (n'existe pas). Substitute: Le Bistro des Arts, 21 bd de la République, Tel 05.46.05.91.22; open kitchen, good pizzas, inexpensive; run by Christophe and Anastasia.
- Ditto Chartlet, insert It Iso 4s 2M at the head of the spur projecting from the Mole Nord (just below the Ⓢ symbol).

269 Bordeaux

Berthing, option ii (Bassin No 2). LH column, line 6, after HW + $\frac{1}{2}$ insert: If early, there is a 50m long waiting pontoon 100m upstream of the lock and on the same bank.

After the last line of option iii, insert:

iv. A new marina has been installed at Bègles, Km 66 (about 5km upstream of Pont de Pierre) on the west bank immediately south of the ring road bridge (La Rocade). Known as Port de Bègles it has approx 80 berths inside a wavebreak, which points down-river, and on inner pontoons. It is reported to be expensive and concerns have been expressed about the current and inadequate security against intruders. Tel 05.56.85.76.04 or 06.77.09.43.99.



272 RH col

Table “VNF LICENCE FEES”. Insert the following table in Euros for 2002 (Note the rates have not changed since 2000):

	<12m ²	12-25m ²	25-40m ²	40-60m ²	>60m ²
1 Year	71.50	103.36	206.72	334.02	413.59
30 days	41.31	73.94	130.34	202.76	251.39
16 days	15.85	31.86	47.72	63.57	79.43
1 day	7.77	15.55	23.32	31.10	39.03

276 R. Garonne

Timing, after the last line insert:

Another tactic is not to stop at Bordeaux at all, but to de-mast at Pauillac, leave there against the last of the ebb and stop at Portets (Km 50) where the pontoon is safe, quiet and free – a passage of some 37M, with 18M to go to the first lock at Castets-en-Dorthe.

277 Ditto

Passage Notes, line 8, after centre span, insert: The pontoon at Langoiran is reported to have been re-installed.

299 Sète

Chartlet, in lower RH corner amend light, QR, to Iso R 4s 11M.